

USAID EDUCATION POLICY

The primary purpose of programming in education by USAID is to achieve sustained, measurable improvements in learning outcomes and skills development. The policy applies to education programming across all levels (from pre-primary through higher education), contexts (stable contexts to crisis and conflict-affected environments), skills (reading, math, social-emotional, and technical/vocational), and populations (including marginalized and vulnerable children and youth).

EDUCATION INDICATORS

Standard Indicators, Program Area Narratives, and Key Issue Narratives help USAID staff and partners monitor, learn, and report against the policy, enabling Missions to better:

- Align learning and accountability with the policy
- Improve measurement of access and systems strengthening
- Respond to congressional mandates and comply with operational policy (ADS)

SUPPLEMENTAL INDICATORS

Responding to the priorities of the policy, Supplemental Indicators focus on topics such as numeracy skills, teacher quality, social-emotional skills, and an expanded range of youth skills. Use of Supplemental Indicators is voluntary; however, they are important for understanding USAID's impact and reach in education globally.

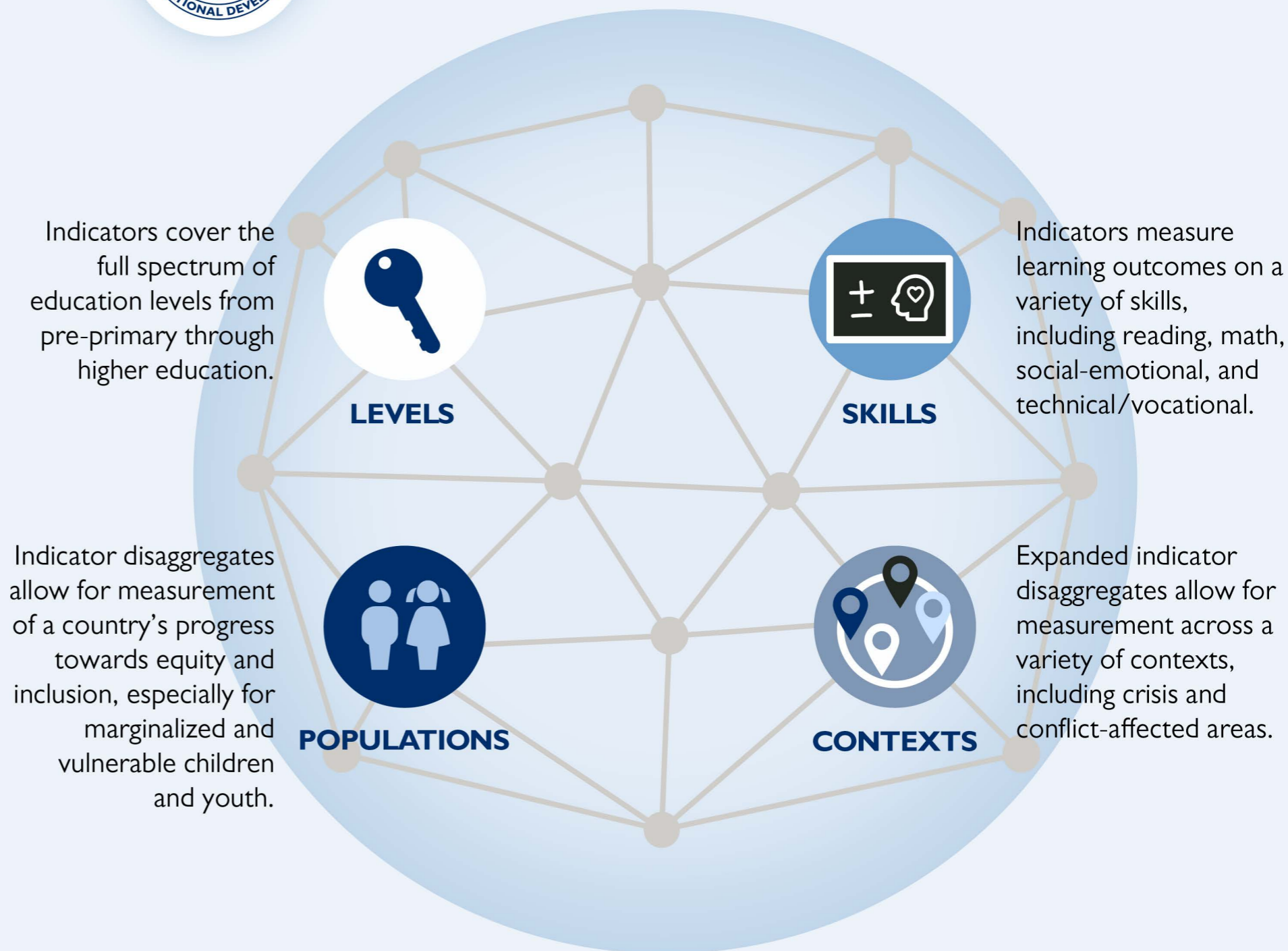
ARCHIVED INDICATORS

Programs may still report on indicators that have been archived, using them as Custom Indicators, but use of archived indicators complicates aggregate reporting.



VISION

PARTNER COUNTRY EDUCATION SYSTEMS ENABLE ALL CHILDREN AND YOUTH TO ACQUIRE THE EDUCATION AND SKILLS NEEDED TO BE PRODUCTIVE MEMBERS OF SOCIETY.



ENSURING EQUITY & INCLUSION

Disaggregates are essential to monitor USAID's engagement with children and youth who are marginalized or vulnerable and to ensure programs reach their intended beneficiaries. While not all disaggregates are mandated, the Center for Education includes them in reporting requirements because the information they provide is central to the policy and USAID's education work.

LEARN MORE AT EDUCATIONLINKS

Education Reporting Toolkit ► edu-links.org/indicators

Helpdesk ► EDIndicators@usaid.gov